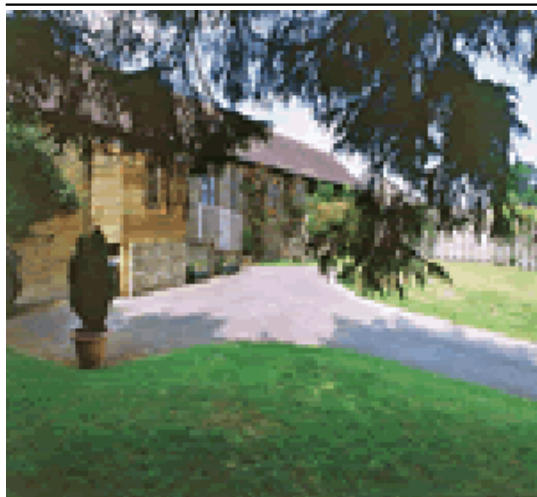


The Park and Upper Onibury Cottages



Onibury
Onibury, Shropshire SY7 9AW
West England

Phone: 0844 847 1143

Nestling in 2000 acres of lovely grounds amidst Shropshire's beautiful rolling countryside these handsome properties share use of a superb indoor heated swimming pool a tennis court and a small gymnasium. Built in 1840 from the mellow local stone and grouped around a fine courtyard the four cottages are sympathetic barn conversions retaining a wealth of original features in their carefully furnished interiors whilst The Park is a luxuriously appointed and very spacious modern stone barn faithfully built in traditional style and boasting captivating rural views.

Wonderful walks start from the door through the owners' 2000 acre estate or further afield in the historic Border country. Ludlow famous for its gourmet restaurants annual festival magnificent castle ruins and parish church as well as its many interesting shops and pubs is just 5 miles away.

Stokesay Castle and the Shropshire Hills Discovery Centre are 2 miles and historic Shrewsbury and the Ironbridge Gorge Museum are easily accessible. Fishing golf and National Hunt racing are all under 5 miles. Shops and pubs serving food ½ mile.

This very comfortable cottage enjoys stunning views over Ludlow and surrounding countryside. Sitting room with electric fire and dining area. Well equipped modern fitted kitchen with dining area. Double bedroom with ensuite shower room/WC. Two twin bedded rooms. Bathroom/WC (shower attachment).

[Visit Website](#)

[Email Friend](#)