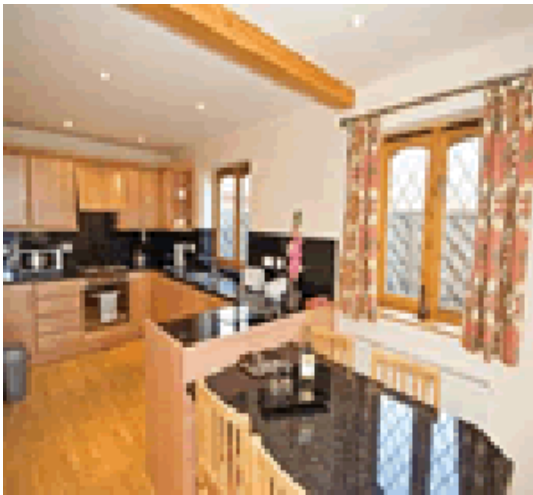


# Beech Cottage Atwick

---



Hilltop Farm Hornsea Road  
Atwick, East Yorkshire YO25 8DG  
North East England

Phone: 0844 847 1143

Enjoying a peaceful and private enclosed garden setting these two smartly furnished and very well equipped adjoining single storey properties sit within 100 yards of the village inn and only ½ mile from the coastal path. Just 4 miles away lie the sandy beach and charming town of Hornsea a freshwater lake with boating and fishing and shopping at the 'Freeport' outlet. A drive of under 15 miles reaches The Deep undersea experience at Hull and the busy resort of Bridlington is about 12 miles distant. The great historic houses of Burton Agnes and Burton Constable are both around 10 miles away whilst the fascinating city of York is a lovely 40 mile scenic drive across the beautiful Yorkshire Wolds.

The cottages share access to a large playing field and also free use of the heated indoor swimming pool at the local Leisure Club (2 miles away). Golf and coarse fishing 2 miles. Shops 4 miles.

Wide patio door entrance to very comfortable open plan sitting/dining room with well equipped kitchen. Double bedroom. Twin bedded room. Bathroom/W.C. with separate shower cubicle.

[Visit Website](#)  
[Email Friend](#)