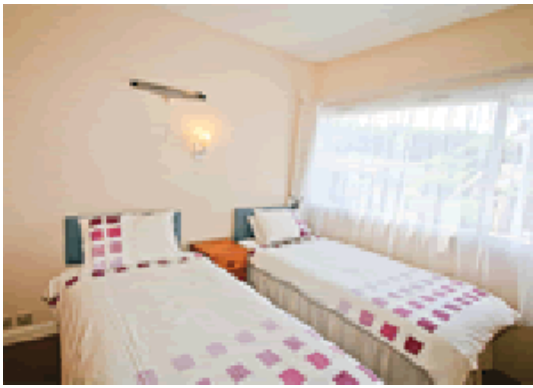


Fishcombe



Seacove Fishcombe Road
Brixham, Devon holidays TQ5 8RU
South West England

Phone: 0844 847 1143

Set just 100 yards from glorious sand and shingle Fishcombe Cove these single storey properties are two of a group of five perfectly placed to enjoy the myriad charms of Brixham – a bustling fishing port much loved by artists. Located on the South West Coastal Path near a World War II Heritage site both properties are also within easy reach of the English Riviera towns of Paignton and Torquay – a seasonal ferry runs between Brixham and Torquay/Dartmouth/Paignton. Ever popular with holidaymakers this delightful corner of the South West supports a host of festivals and events throughout the season and nearby attractions include Quaywest Water park Paignton Zoo The Living Coast Woodlands Adventure park the Shoalstone open air seawater swimming pool and Berry Head Forts and Country Park. As well as its lovely harbour where visitors can buy fresh local seafood Brixham offers shops cafés pubs and restaurants for all tastes many of which are dog friendly. Shops and a pub serving food are ½ mile away.

Light and airy open plan sitting room with electric fire kitchen area and breakfast bar. Double bedroom. Twin bedded room. Shower room. Separate W.C.

[Visit Website](#)

[Email Friend](#)