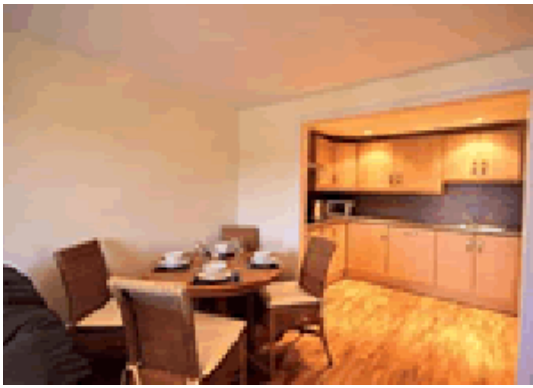


Conqueror Cottage



Blaisdon Lane
Blaisdon, Gloucestershire GL17 0AL
South West England

Phone: 0844 847 1143

Set down a tree lined drive (pictured) these three newly converted spacious and immaculately presented cottages are delightfully located on the fringes of the village of Blaisdon. Famous for its plum orchards and voted best kept village four times in recent years Blaisdon boasts many timber framed buildings dating back to the 15th century – the excellent local pub is just a 300 yard stroll. Stud Farm itself is a working farm once home to Blaisdon Conqueror the world's largest Shire horse (his bones are now in the British Museum) and makes an ideal base for exploring the Forest of Dean. A haven for wildlife and setting for the Cannop Valley and Nags Head RSPB reserves the Forest is crisscrossed by nature trails and cycleways – superb for walking and mountain biking. The fascinating Clearwell Caves iron mines steam train trips and a wide variety of outdoor activities are all easily accessible as are water sports at Ross-on-Wye the cathedral city of Gloucester and its historic docks (10 miles) Cheltenham and Hereford. Shop 1 mile.

Open plan sitting room with dining area well equipped kitchen and French doors to terrace. Double bedroom. Twin bedded room. Bathroom (shower over bath) and separate shower cubicle. Separate W.C.

[Visit Website](#)

[Email Friend](#)