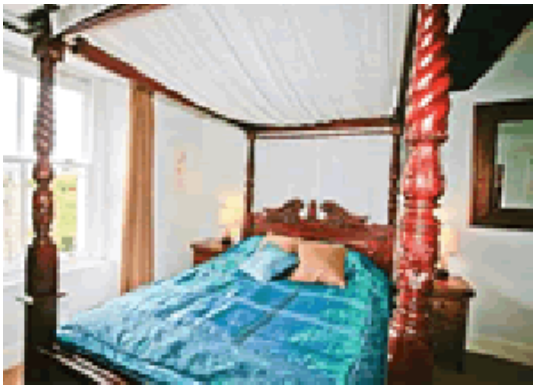


# Larkrise

---



Cannington, Somerset TA5 2LD  
South West England

Phone: 0844 847 1143

Standing in 3½ acres of superbly landscaped gardens boasting many rare trees and shrubs this magnificent Victorian mansion and its former stables offer an excellent choice of comfortable and well equipped accommodation and a host of activities. The mansion itself has been converted into four apartments of various sizes and to the side of the main house the former stable block is now three cottages which open onto a courtyard.

In the garden the splendid Victorian style conservatory houses an indoor heated swimming pool with corner steps for small children and a water slide for older ones. There is also a spa bath and sauna and nearby a communal brick built barbecue is perfect for socialising on mild summer evenings. Croquet may be enjoyed on the front lawn outdoor chess and badminton on the rear play area with swings and climbing frame and a secret tree fort hidden in an ancient chestnut tree will keep children entertained. A tree lined fishing pond is ideal for an afternoons relaxing sport!

The games room offers table tennis a children's snooker table as well as a music centre and Play station 1. A separate fitness room with multi gym tread mill and exercise bike is available for adults only by arrangement and if all this sounds too energetic the lovely grounds provide plenty of space for simply relaxing.

The Grange's location on the fringes of the beautiful Quantock Hills ensures ample opportunity for walking horse riding mountain biking. Kilve beach (5 miles) is a gem for fossil hunters and at low tide a small sandy beach lies nearby. Bridgwater (4 miles) is transformed in early November by a renowned festival and Glastonbury Bath Cheddar Gorge Weston-Super-Mare and Dunster Castle are all within an hour's drive. Cannington village (under ½ mile) offers shops good pubs and golf.

Spacious family apartment on second and third floors enjoying spectacular garden and countryside views. Shared stairs to first floor and private interior stairs to entrance on second floor. Attractive sitting/dining room with marble fireplace and electric 'coal effect' fire and spectacular views. Fitted galley kitchen. Double bedroom with king size four poster bed. Bathroom/W.C. (shower over bath) and bidet. Steep stairs to very large gabled attic bedroom with four single beds.

[Visit Website](#)  
[Email Friend](#)

