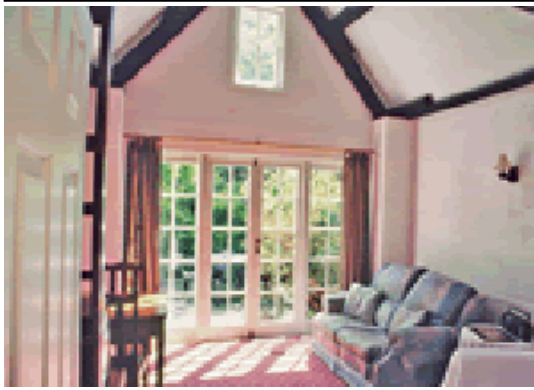


# The Old Coach House

---



Ellicombe, Somerset TA24 6TR  
South West England

Phone: 0844 847 1143

At the foot of Grabbist Hill (N.T.) in the Exmoor National Park these four beautifully furnished and well equipped Grade II listed cottages are set in the grounds of 16th century Ellicombe Manor. Clustered around a cobbled courtyard they enjoy shared use of an outdoor heated swimming pool with its own walled area and poolside furniture and an acre of magnificent sub tropical gardens and 3 acre paddock offering views over the West Somerset Steam Railway and across the Bristol Channel to the Welsh coast.

The gardens are a special feature of Ellicombe Manor filled with mature palm trees named exotic plants and shrubs and quiet corners with seating. Here too visitors may discover the 'secret garden' or enjoy a game of outdoor chess.

A mile away Dunster with its famous castle yarn market and pre Christmas candlelight shopping offers a selection of pubs shops and restaurants. Minehead's resort attractions sandy beach and coastal path walks are also close by. Golf river and lake fishing horse riding and wonderful walking locally in Exmoor National Park and west Somerset Steam Railway weekends.

A detached and secluded cottage. Very attractive sitting/dining room with vaulted ceiling and door to terrace. Small well equipped kitchen. Two steps down to double bedroom. Bathroom/W.C. (shower over bath).

[Visit Website](#)  
[Email Friend](#)