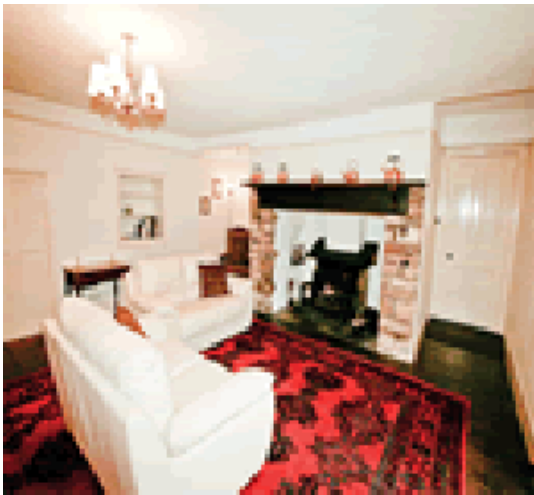


Roadwater Cottages



Roadwater
Roadwater, Somerset TA23 0RQ
South West England

Phone: 0844 847 1143

Close to Exmoor National Park and set in 17½ acres of beautiful grounds where woodpeckers and kingfishers flourish these comfortable properties have been created within a splendid early 1800s country house. The house is now divided into three – Lowood forms the central part and Littlewood is a ground floor apartment with its own entrance to the right of the front door (the owners occupy one wing). Carriage driving is offered here and there is a small CC (5 vans) site in high season. Minehead with good shopping and famous Blue Anchor Bay is about 5 miles as are Dunster Castle the West Somerset Steam Railway and Watchet's picturesque harbour. Just a little further away visitors can explore the pretty village of Porlock Porlock Weir and its small harbour and the delightful resorts of Lynton and Lynmouth linked by a unique cliff railway. Pubs serving food and shop/P.O. about ½ mile.

Very spacious sitting room with wood burning stove and dining area. Small kitchen. Bathroom (shower over bath). Separate W.C. Double bedroom with 5' bed.

[Visit Website](#)
[Email Friend](#)