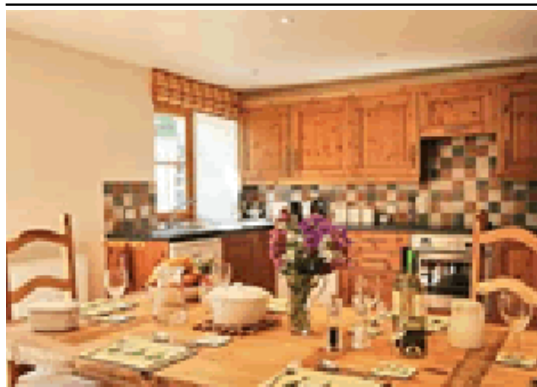


# Horse Mill Cottage

---



Horse Mill Cottage Newhill Farmhouse  
Auchtermuchty, Fife KY14 7HS  
Central Scotland

Phone: 0844 847 1143

Nestling on a peaceful upland farm and on the edge of a forest ideal for cycling and walking from the doorstep these beautiful barn conversions have been sensitively and creatively renovated. Boasting individual gardens and separate access they sit beside the owners' 16th century farmhouse. Pretty East Neuk fishing villages the Scone Palace St Andrews Falkland Palace (7 miles) RSPB Loch Leven and Perth (15 miles) are all in easy reach. Golf riding and fishing are nearby; pubs and shops in Auchtermuchty 2 miles.

Spacious sitting room with open fire. Well equipped kitchen with dining area. Cloakroom/W.C. First floor: Master double bedroom with 5' bed and ensuite bathroom/W.C. (shower over bath). Double bedroom. Twin bedded room. Bathroom/W.C. (shower over bath).

[Visit Website](#)  
[Email Friend](#)