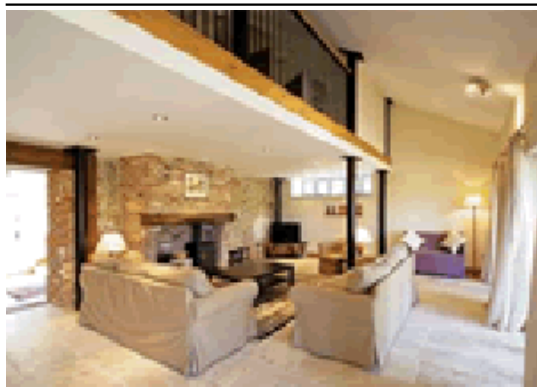


The Strawhouse Tattersett



Manor Farm
Tattersett, Norfolk PE31 8RS
East England

Phone: 0844 847 1143

Nestling peacefully in one of North Norfolk's prettiest villages this attractive cluster of cottages has been created from the sympathetic conversion of a range of handsome farm buildings. Retaining many original features including fine timber beams in their tastefully appointed and very comfortable interiors they enjoy a wonderfully tranquil rural setting on a working dairy farm near the owners' lovely farmhouse. Each cottage boasts its own individual sitting out area (one property has a private hot tub) and all of them enjoy access to the surrounding countryside where gentle walking cycling and bird watching are popular pastimes. Delightfully combining idyllic country pleasures with the added benefit of an onsite hairdresser's and beauty salon Manor Mews offers the perfect haven in which to relax and unwind.

If visitors can tear themselves away from the comforts of the cottages a wide variety of attractions invite exploration. Just 12 miles away is Well-next-the-Sea home to a little narrow gauge railway that carries passengers the one mile journey to and from the sandy beach as well as interesting shops ice cream parlours cafés a famous whelk stall theatre restaurants and pubs. Walsingham site of the famous Shrine and the Burnhamâ€™s with their close associations with Nelson are always a delight and no holiday in North Norfolk would be complete without a visit to the Palladian mansion of Holkham Hall where a herd of about 800 fallow deer roam its vast parkland open all year round and offering pleasant circular walks and cycle and nature trails.

Seal watching boat trips depart from several picturesque fishing villages along the coast the lovely harbour at Blakeney is a joy to visit and there are countless pubs serving freshly caught local seafood. Cromer is renowned for its delicious crab sandwiches and seasonal end of pier show whilst at the seaside resort of Hunstanton the beach appears to go out for ever.

Fakenham (5 miles) draws numerous visitors to the races and its friendly weekly market and the Georgian town of Holt boasts fine independent shops while trips to the Queen's Estate at Sandringham and the Norfolk lavender fields are always popular.

An easy drive leads to the medieval city of Norwich with its excellent shops historic buildings and castle museum of local history – the magnificent cathedral and cobbled Elm Hill are not to be missed. All these delights and so much more are readily accessible from

[Visit Website](#)
[Email Friend](#)

