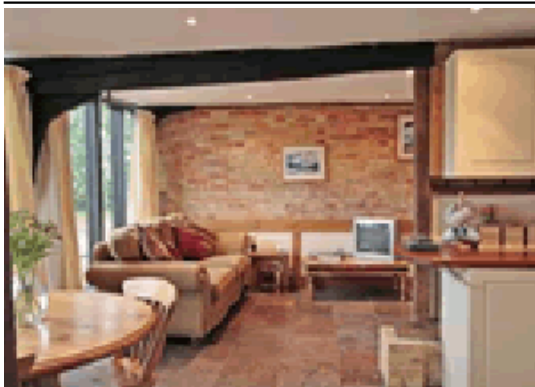


The Cart Lodge Uggeshall



Uggeshall Manor Farm
Uggeshall, Suffolk NR34 8BD
East England

Phone: 0844 847 1143

Set just 3 miles from the Suffolk Heritage coast in a tranquil gently elevated setting affording undulating country views all around these two superb and stylishly converted barns are ideal for all weather holidays with family and friends. Retaining a wealth of original character in their beautifully furnished and well equipped interiors they can (by arrangement) be interconnected to accommodate up to 12 people. Enjoying their own individual gardens they sit near the owners' lovely Edwardian home in 20 rural acres home to grazing horses and nesting owls as well as a small lake.

A short 3 mile drive reaches the Blue Flag Pier beach at Southwold and from the harbour of this lovely seaside town famous for its colourful beach huts lighthouse and Adnams beer there is an easy walk over the footbridge to the pretty Walberswick village (a rowing ferry plies back and forth in the summer months). Africa Alive at Kessingland boat hire for the Southern Broads at the market town of Beccles RSPB Minsmere Dunwich Heath (N.T.) and superb fish and chips by the beach at the little village of Dunwich are all under 8 miles away whilst the medieval city of Norwich with its castle cathedral cinemas restaurants and excellent shopping is 26 miles. Shop and pubs 1 mile.

Hall. Sitting room. Kitchen with dining area. Cloakroom/W.C. First floor: Double bedroom. Two single bedrooms. Bathroom/W.C. (shower attachment).

[Visit Website](#)
[Email Friend](#)