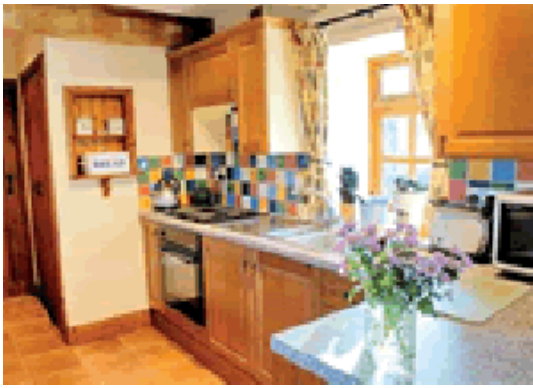


# Chicken Coop View cottage Otterburn

---



Elishaw Moor  
Otterburn, Northumberland NE19 1JH  
North East England

Phone: 0844 847 1143

In a picturesque setting on the edge of the Northumberland National Park are these lovely barn conversions. Comfortable and well appointed visitors also enjoy magnificent views and access to 12 acres of grounds with a private stretch of the River Rede ideal for picnics and fishing for brown trout and salmon. This is a perfect location to enjoy the Scottish borders Kielder Northumberland coastline Hadrians Wall Alnwick and shopping at Newcastleâ€™s Metro Centre. Shops and pubs 2 miles.

Spacious sitting room with wood burning stove dining area and original beams. Modern well equipped kitchen. Double bedroom. Twin bedded room. Bathroom/W.C.

[Visit Website](#)

[Email Friend](#)